

record FTA 20

automatic folding doors



FTA 20



FTA 20



record FTA 20 – automatic folding doors

Our folding doors and their variants use another design principle of automatic doors.

record FTA 20

If there is only limited space for door leaves to open in the passage area, which excludes the use of sliding doors, an automatic folding door provides a good solution.

The width of passage can be almost fully retained. Automatic folding doors can be retrofitted relatively easily; they are designed to work particularly well when fitted in corridors. Depending on the total width available, the folding door is built as one- or two-sided. Typical applications for the record FTA 20 can be found in gastronomy, in the passage to the pantry, for example, or from the kitchen to the dining area, but a recent trend is to use the door to implement non smoking laws by separating non smokers from newly set up "smoking lounges".

record FTA 20 FBO

A special feature is the optional «break-out» function (FBO), permitting the record FTA 20 to be used as an escape door in accordance with local conditions and regulations. As with the TOS (Total Opening System) of our automatic sliding doors, the FBO enables swing doors to function as emergency exits by opening in the direction of escape as quickly as possible.

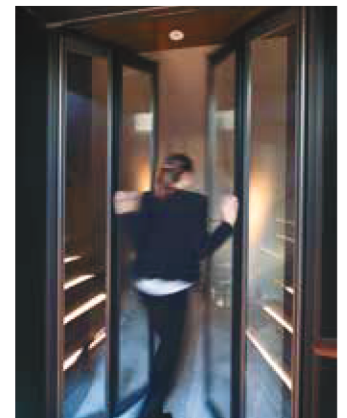
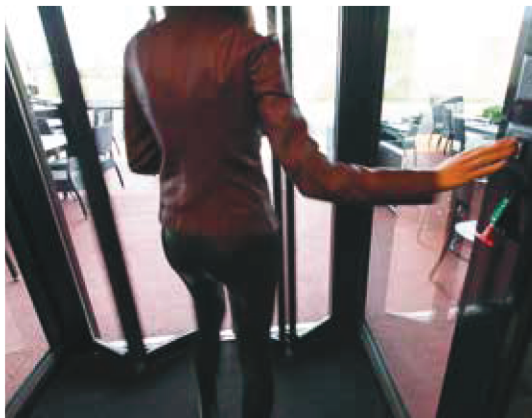
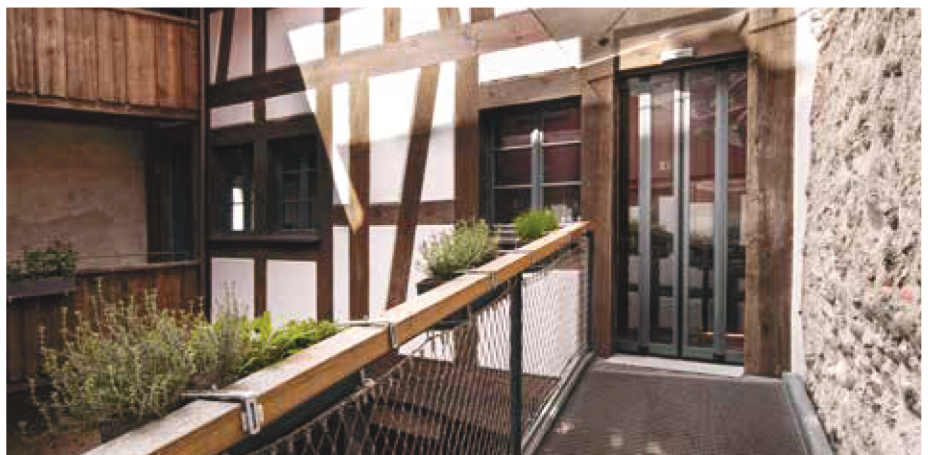
The FBO folding door was specially developed for use in escape and rescue routes. In normal use, the door panels fold inwards. In emergencies, access to escape and rescue routes is provided by light pressure on the door panel. This frees the track from its mountings, allowing the door panel and track to open outwards.

Applications

The record folding door is ideal for narrow passageways in restaurants, hotels, business headquarters, hospitals and old people's homes.

Optional details

- Aluminium frame and cover available in all anodised and paint colours
- record BDE-D: the electronic remote control unit with back-lit graphic display enables easy setting of individual parameters (speed, hold open time etc.), and other additional functions.



Specification

record FTA 20 – automatic folding door

Opening width (A):	800 – 2 000 mm
Door leaf weight max.:	4 x 37,5 kg
Door operating speed:	0,7 m/s
Height of passage (G):	up to 2 500 mm
Operating housing dimension:	D x H: 240 x 180 mm
Power supply:	230 VAC / 50 / 60 Hz
Ambient temperature:	- 15 °C to + 50 °C
Trigger devices:	radar / infrared detectors, switch etc.
Basic functions:	<ul style="list-style-type: none"> → automatic operation → one way traffic → continuously open → manual control → interlock function → operating lock → automatic reverse
Options:	<ul style="list-style-type: none"> → interlock control → emergency cut-off function → remote control and surveillance → night control → bell option → door leaf surveillance → key operated contact (SSK) → module for extended functionality (FEM)
Assembly variants:	→ Wall or beam assembly



→ Cemeks

Zümrütevler Mah. Eski Üsküdar Cad. Ural Sok. No: 9 Maltepe/İstanbul
tel.: 0216 417 50 23 e-mail: info@cemeks.com.tr - www.cemeks.com.tr

→ record UK limited

Head Office: Unit D, 9 Watt Place – Hamilton International Park – Blantyre – G72 0AH – UK
Central Office: 450a Bradford Road – Batley – WF17 5LW – UK
Southern Office: 17 Invincible Road – Farnborough – GU14 7QU – UK
tel.: +44 1698 376411 – fax: +44 1698 376422 – info@recorduk.co.uk – www.recorduk.co.uk

→ record global export

agtatec ag – Allmendstrasse 24 – 8320 Fehrltorf – Switzerland
tel.: +41 44 954 91 91 – e-mail: international@agta-record.com – www.agta-record.com

→ Headquarters

agta record ltd – Allmendstrasse 24 – 8320 Fehrltorf – Switzerland
tel.: +41 44 954 91 91 – e-mail: info@agta-record.com – www.agta-record.com



your global partner for entrance solutions